



Canada Energy
Regulator

Régie de l'énergie
du Canada

Canada

Land Matters Group



Synergy Alberta Winter Workshop
Red Deer, Alberta

February 2, 2023


A large orange shape on the left side of the slide, consisting of a rectangle and a quarter-circle, with a white title text inside.

Background – 2011 and the LMG

The Land Matters Group was initially created by the NEB as an outcome of the Land Matters Consultation Initiative, and this support was reiterated following the transition from the NEB to the CER in 2019.

What is the LMG?

The LMG operates as a two-way conduit of information between the CER and its broader membership. It provides opportunities to share insights and advice on the protection of landowner and land user rights and interests.

A series of four yellow curved lines in the bottom right corner, arranged to suggest a stylized arrow or a decorative flourish.

LMG Advisory Committee

Purpose	Composition
<p>Collectively, the members can:</p> <ul style="list-style-type: none">• Identify priority issues.• Influence recommendations to the CER to resolve or mitigate issues.• Share best practices for the greater benefit of others.	<ul style="list-style-type: none">• Landowners/land users and landowner associations• Industry• Professional services• Government (federal, provincial/territorial, municipal and publicly funded advocacy groups)

LMG – Priority Issues

The LMG AC has identified three priority issues and collaboratively, we are working on the first two:

- Damage to property
- Access to property
- Early landowner engagement

Damage to Property

A sub-committee composed of LMG AC members and CER staff is tackling this issue:

- Review information currently available.
- Identify information gaps and develop new content.
- Present scenarios that illustrate how common situations have evolved and been resolved.
- Collect this information into a single area.
- Make recommendations to the CER to improve its own regulatory approaches.



PIPELINE INFORMATION PROGRAM

ONE STOP
PIPELINE
INFORMATION

capacity,
apportionment
& throughputs

GIS

inspections
& compliance

visualization

dashboard

data
analysis

OPEN
government

Pipeline
Profiles

plain language
technical information

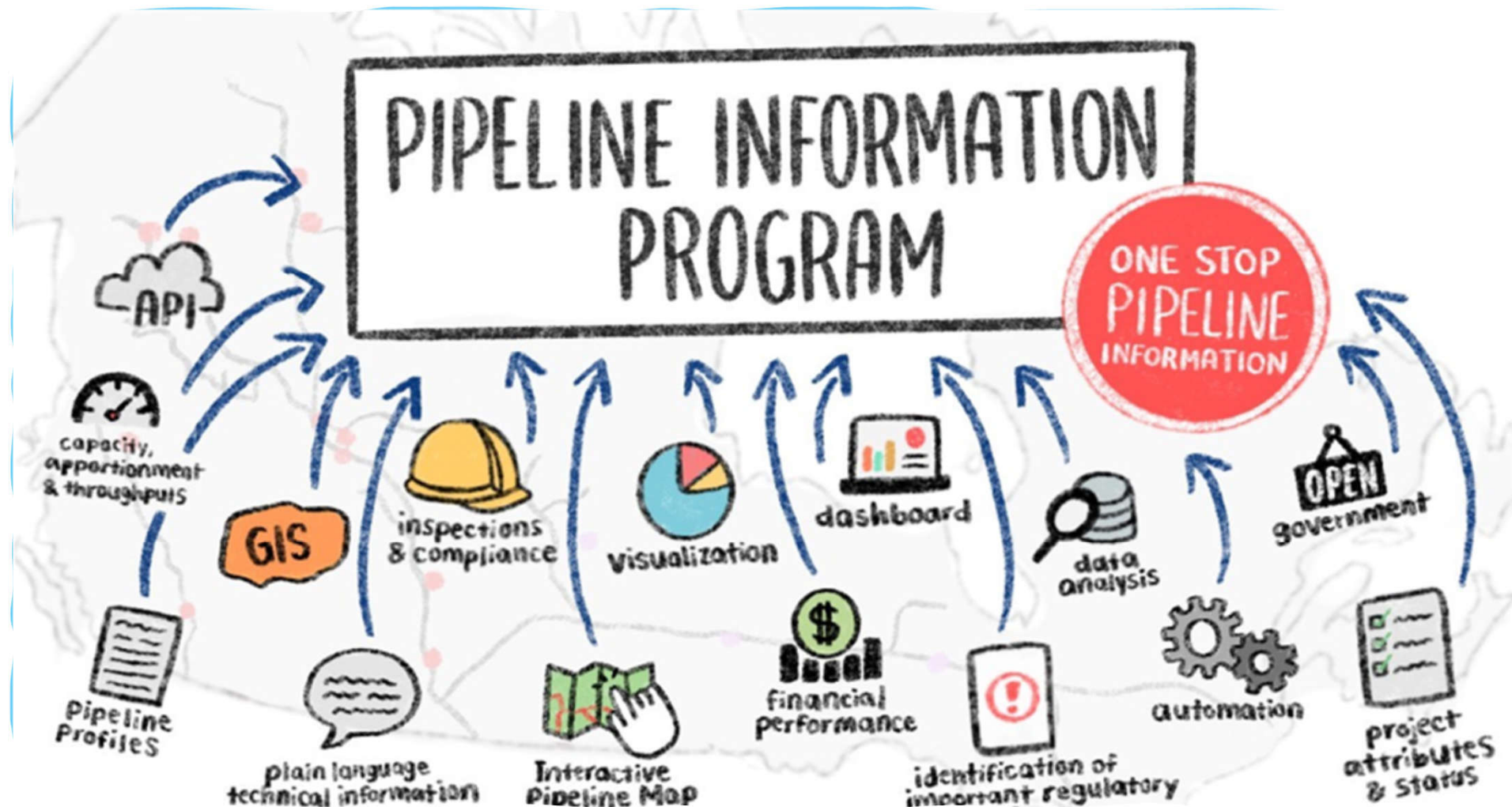
Interactive
Pipeline Map

financial
performance

identification of
important regulatory

automation

project
attributes
& status



Questions?



Canada Energy
Regulator

Régie de l'énergie
du Canada

Canada

Information: cer-rec.gc.ca/LMG

