

The Value of SPOG

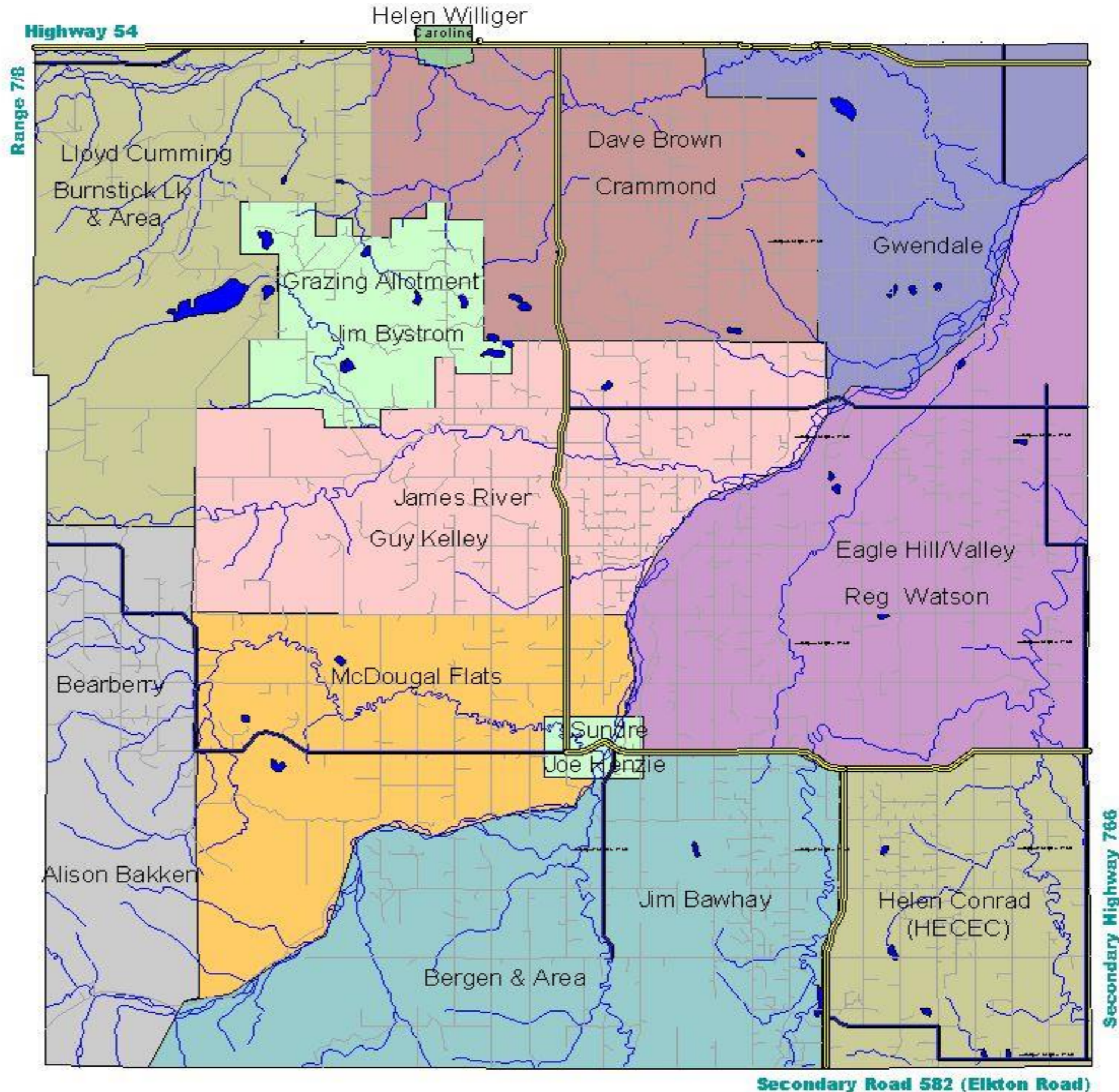


The communication and awareness that SPOG has fostered is dependent on many factors. The most significant of these is the contributions of the key stakeholders. Industry, government and landowners are all part of the synergistic relationship that keep alive the vision and purpose of SPOG. Communication is not possible if only one stakeholder is involved and constructive communication requires all that need a voice in what happens, participate in the process.



SPOG GEOGRAPHIC AREA

- Area of highest overlap of industry Emergency Response Plans
 - 600 square miles
 - 2 Urban centers, 2 Counties, several grazing leases, many summer camps, campgrounds, subdivisions, many farms
- Over 7000 households



Secondary Road 582 (Elkton Road)

Secondary Highway 766

History of SPOG



- Formed in 1992 as a result of request from the public to develop a 1-800 emergency number. John Hawkins from Amoco 1st Chairman
- Originally a dozen industry members now over 20 industry members.
- Companies saw possibilities for maximizing opportunities through co-operation
 - Mutual Aid, Environment and Community Affairs Committees were formed.
 - No community members for first 5 years.

SPOG Vision



“A long-term relationship based on mutual trust, honesty and respect, by way of sharing pertinent information and working towards resolving issues to benefit all stakeholders.”

SPOG Top Achievements



SPOG Vision

1-800 Emergency Number

Mutual Aid

Mutual Learning

Resident Visits

Community Affairs Working Group

IMPACT Newsletter

Environment Working Group

Caroline Livestock Study

Proactive Engagement Process

SPOG Top Achievements



- *Traffic Best Management*

Practices

- *Flaring Best Management*

Practices

- *Sour Gas Drilling and*

Development Performance

Measures

Management Practices

- *New Development Log*

- *SPOG Website*

- *Neighbours' Day*

- *SPOG Office and Staff*

- *Complaint Process*

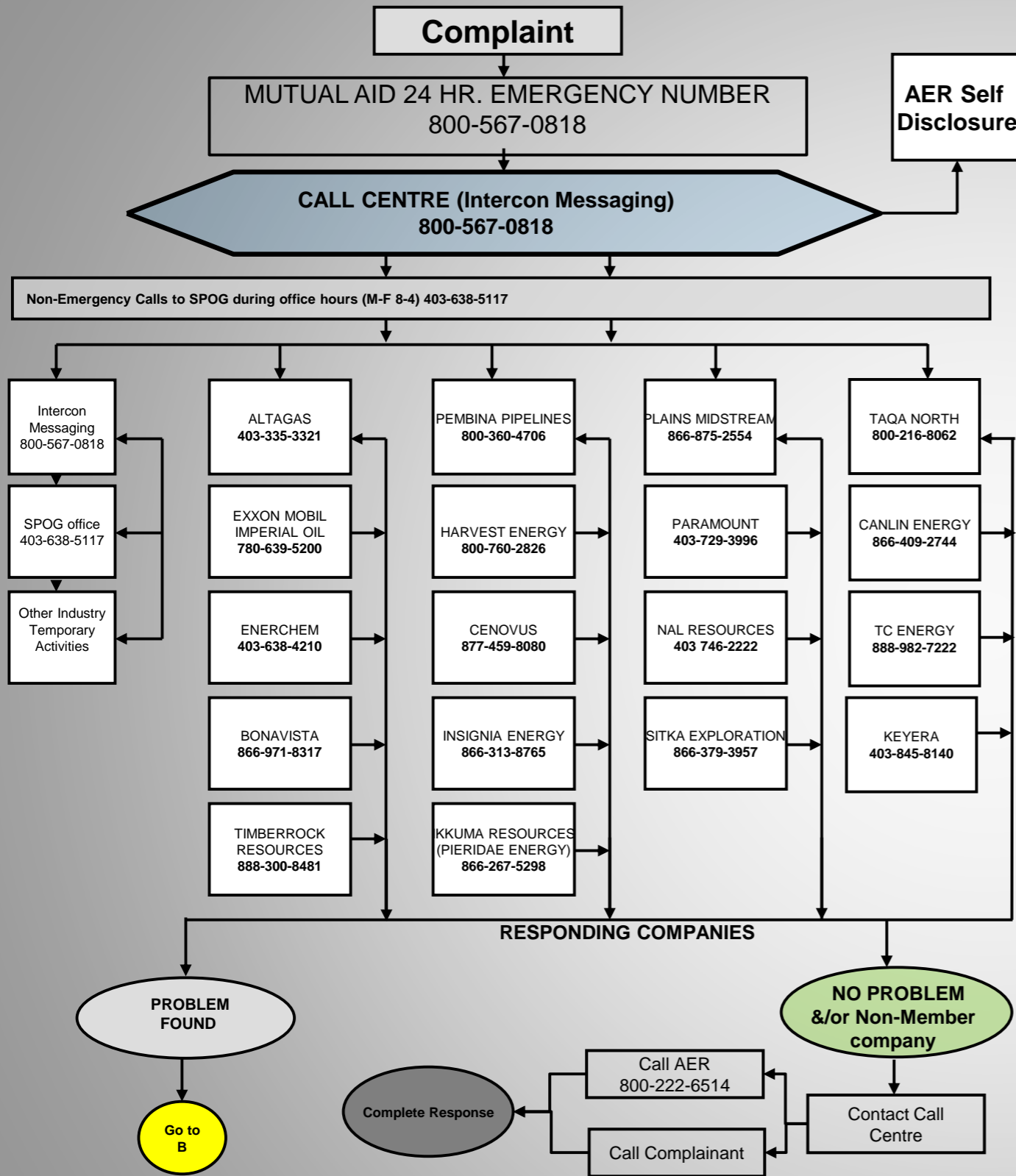
- *SPOG Board of Directors*

Mutual Aid Committee



- 1-800 Mutual Aid Coordination Centre number provides 24/7 response.
- Call down to other companies using geomatics to determine companies within 4KM of an odor complaint
- Resident Visit program carries out joint ERP visits for over 15 companies.
- Approx 6000 resident/landowner/occupant records are managed for Emergency Response purposes.

S P O G CALL DOWN ACTIVATION

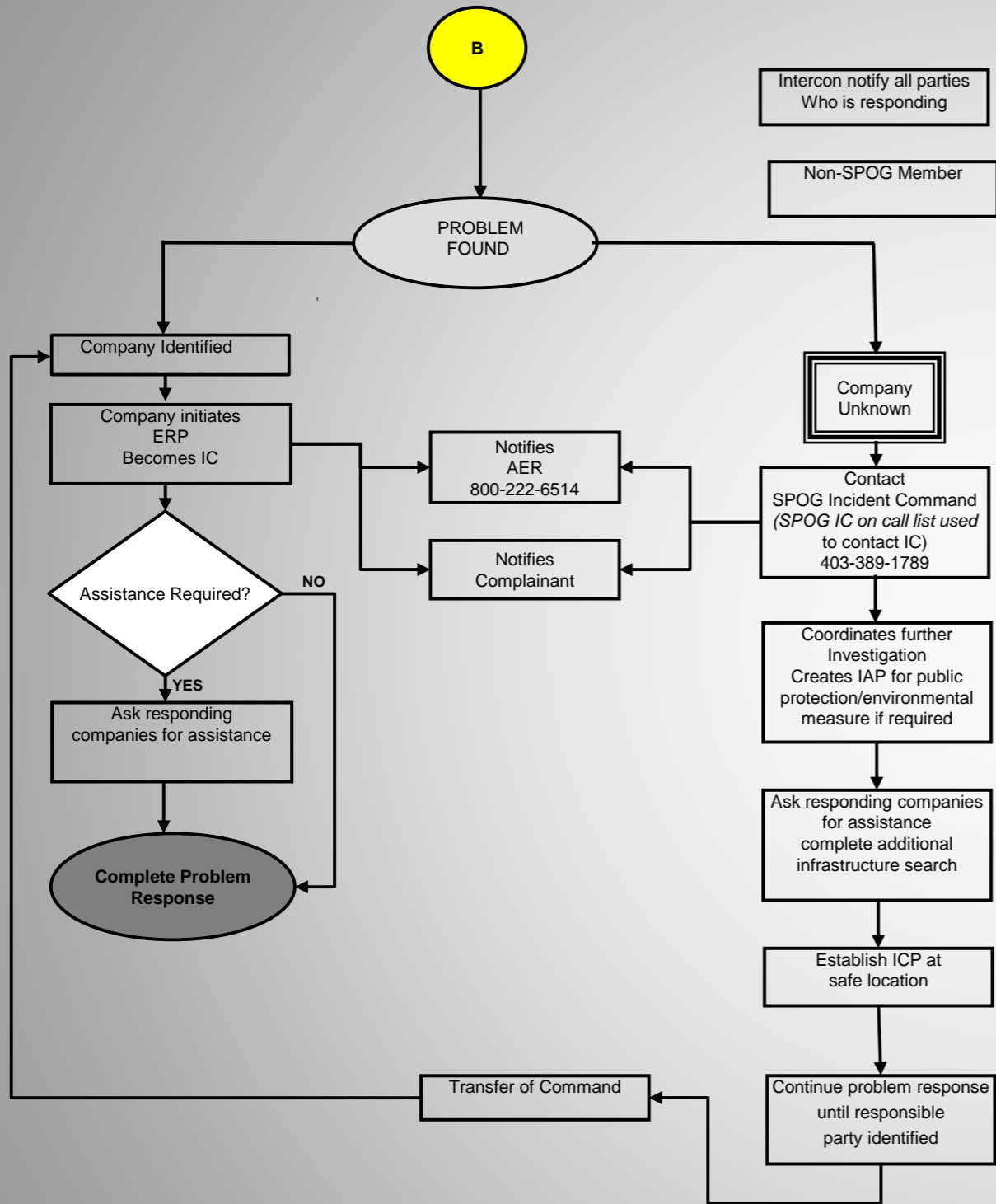


NOTE: Any complaint received by a member company must be reported to the **Call Centre** to log.

SPOG Office 403-638-5117 or 800- 567-0818

Updated Oct 21,2019





Value Of Mutual Aid



- 1. Increases public and regulator confidence in industry response capability.**
- 2. Promotes a common and consistent approach to emergency response within the Mutual Aid area.**
- 3. Sharing of resources (ie. personnel, equipment, expertise) resulting in a more cost effective and efficient response**
- 4. Relationship building between Industry and Community**

Added Value of SPOG Mutual Aid



- 1. SPOG provides a One-number system for notification of potential emergencies.**
- 2. SPOG self-disclosure to AER covers member companies in the initial response to an emergency or potential emergency.**
- 3. SPOG Mutual Aid process provides a wider and more rapid communication/notification and investigation of each other's actual or potential emergencies.**