



# Pipelines and the Landowner

November 15, 2011

# **Agenda**

**Notification/Consultation**

**Setbacks**

**Controlled Area/Right-of-Way**

**Ground Disturbance**

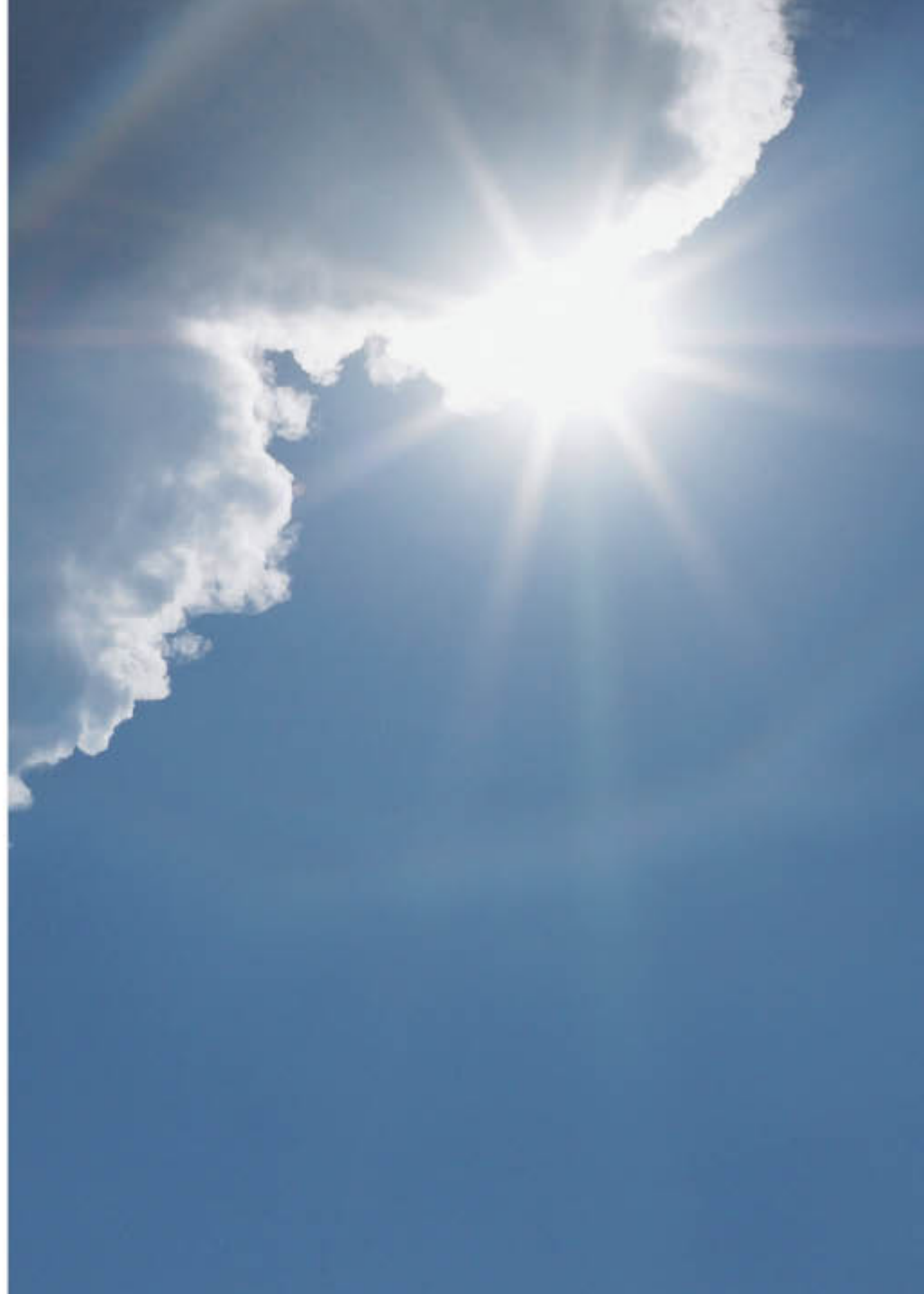
**Pipeline Signage**

**Abandonment**

**Caveats**

**Wellhead Infrastructure**

**Questions**



# Notification/ Consultation

Consultation required with  
landowners and occupants

---

Consultation increases to  
include occupants of the  
100-metre setback radius for  
some sour

---

Notification is required to  
Crown disposition holders





# Notification/ Consultation

Notification is required to local authorities along the Right-of-way

---

Notification is required to Urban authorities within 1.5 km

---

Notification to residents in developments or urban centers if they are in a resulting EPZ



# Setbacks

**Level 1 - Pipeline Right-of-way**

---

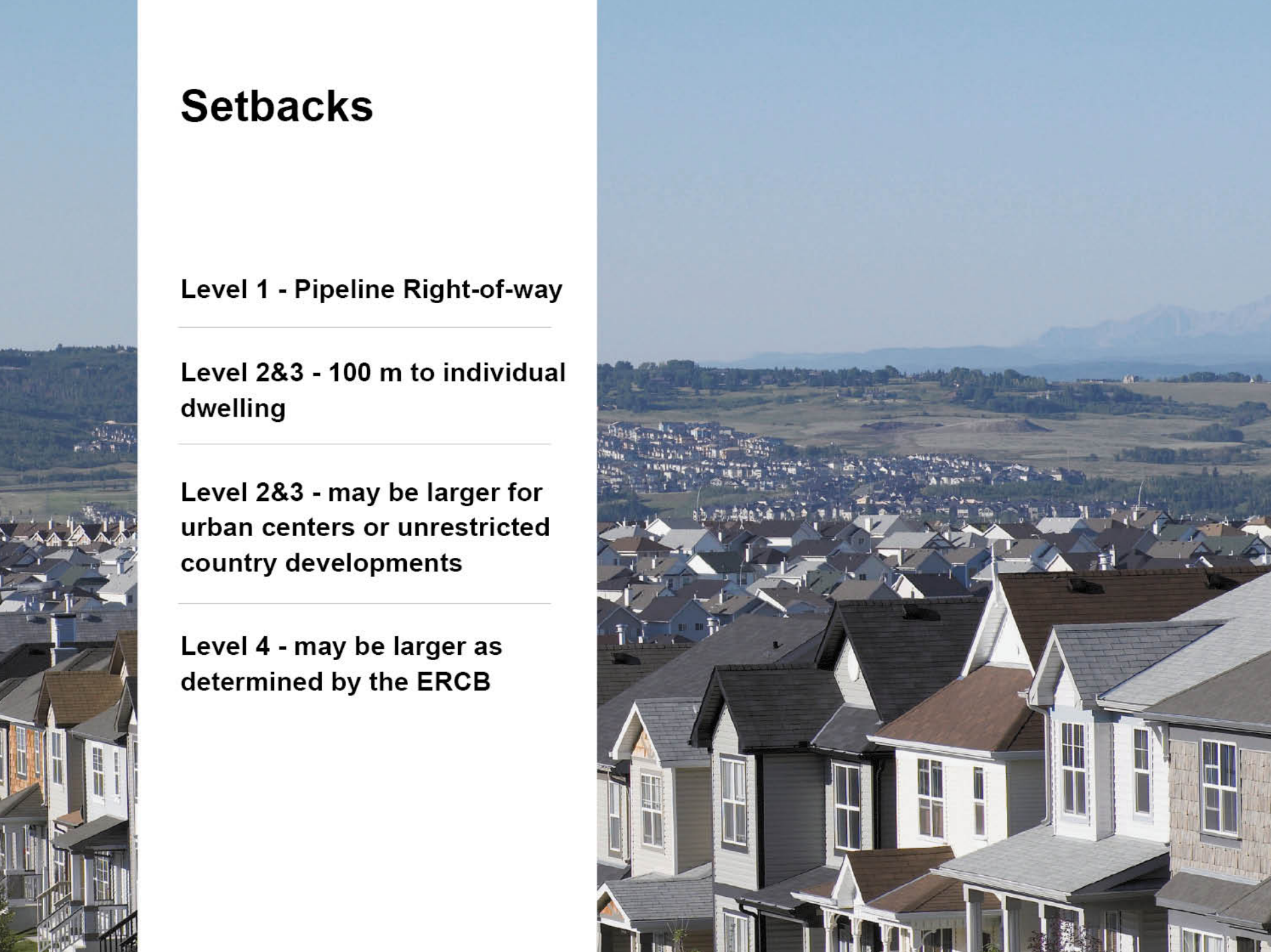
**Level 2&3 - 100 m to individual dwelling**

---

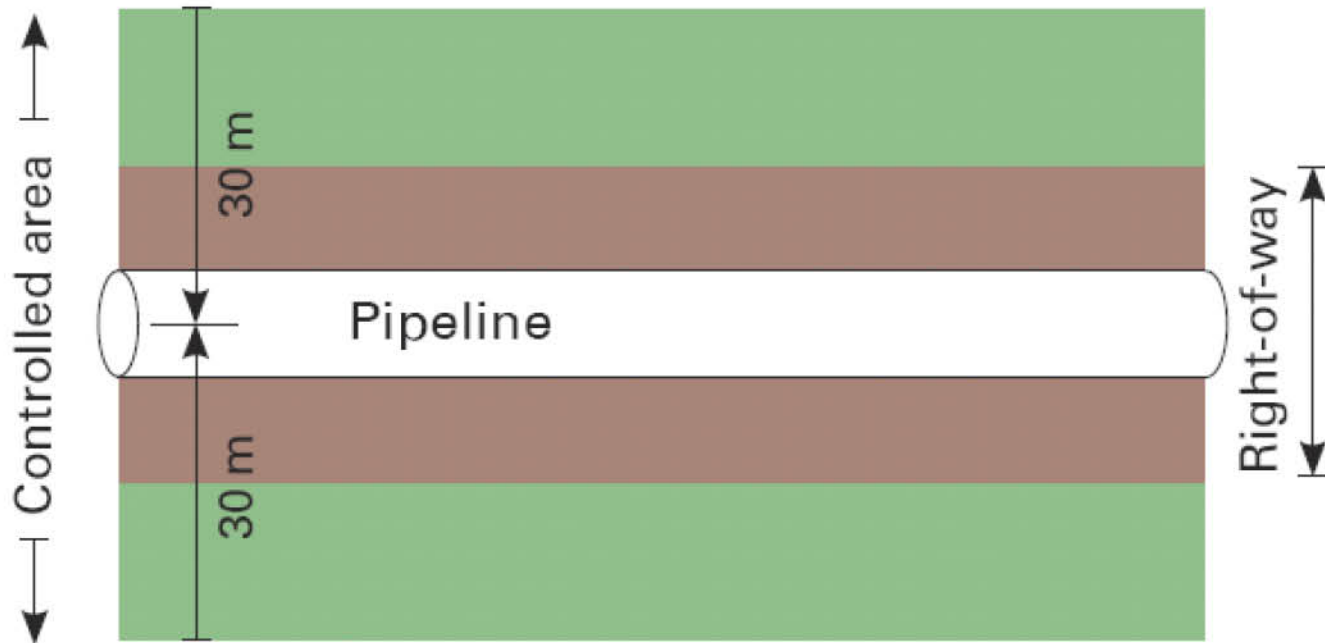
**Level 2&3 - may be larger for urban centers or unrestricted country developments**

---

**Level 4 - may be larger as determined by the ERCB**



# Controlled Area vs. Right-of-way







# Ground Disturbance

Deeper than 30 cm – 45 cm for  
deep cultivation

---

Call Alberta One-Call

---

Additional records checks







# **Ground Disturbance**

**Visual indicators of  
pipeline infrastructure**

---

**Written licensee approval  
within ROW**

---

**Vehicle crossings with  
non farm equipment on  
non upgraded or public  
road crossings also  
requires approval**



# Pipeline Signage

Pipeline warning signs on each side of a highway, road, railway or water crossing

---

Surface lines are buried at road and trail crossings and warning signs are posted at the point of entry and exit of each crossing

---

Signs must identify substance type, Company name, and emergency phone #

---

An additional sign is required for High Vapor Pressure pipelines





# Abandonment

**Must be discontinued or abandoned after 1 year of being out of service**

---

**Isolated and purged**

---

**Abandoned lines disconnected, capped and filled with fresh water, air or inert gas**

---

**Sour setback requirements do not apply for abandoned pipelines other than the ROW**





# Pipeline Removal

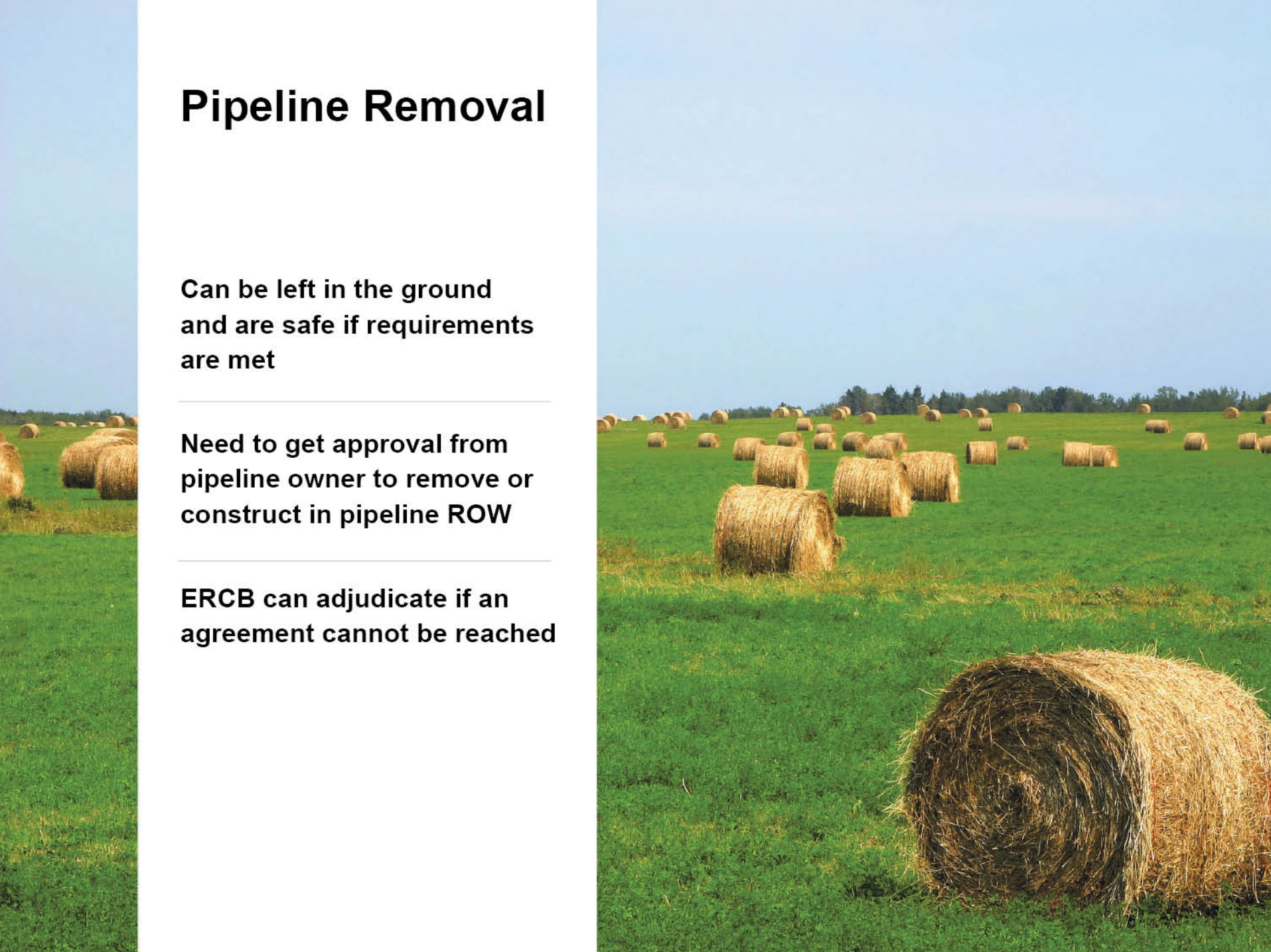
**Can be left in the ground  
and are safe if requirements  
are met**

---

**Need to get approval from  
pipeline owner to remove or  
construct in pipeline ROW**

---

**ERCB can adjudicate if an  
agreement cannot be reached**



# **Caveat Removal**

**Reduce impact to resale**

---

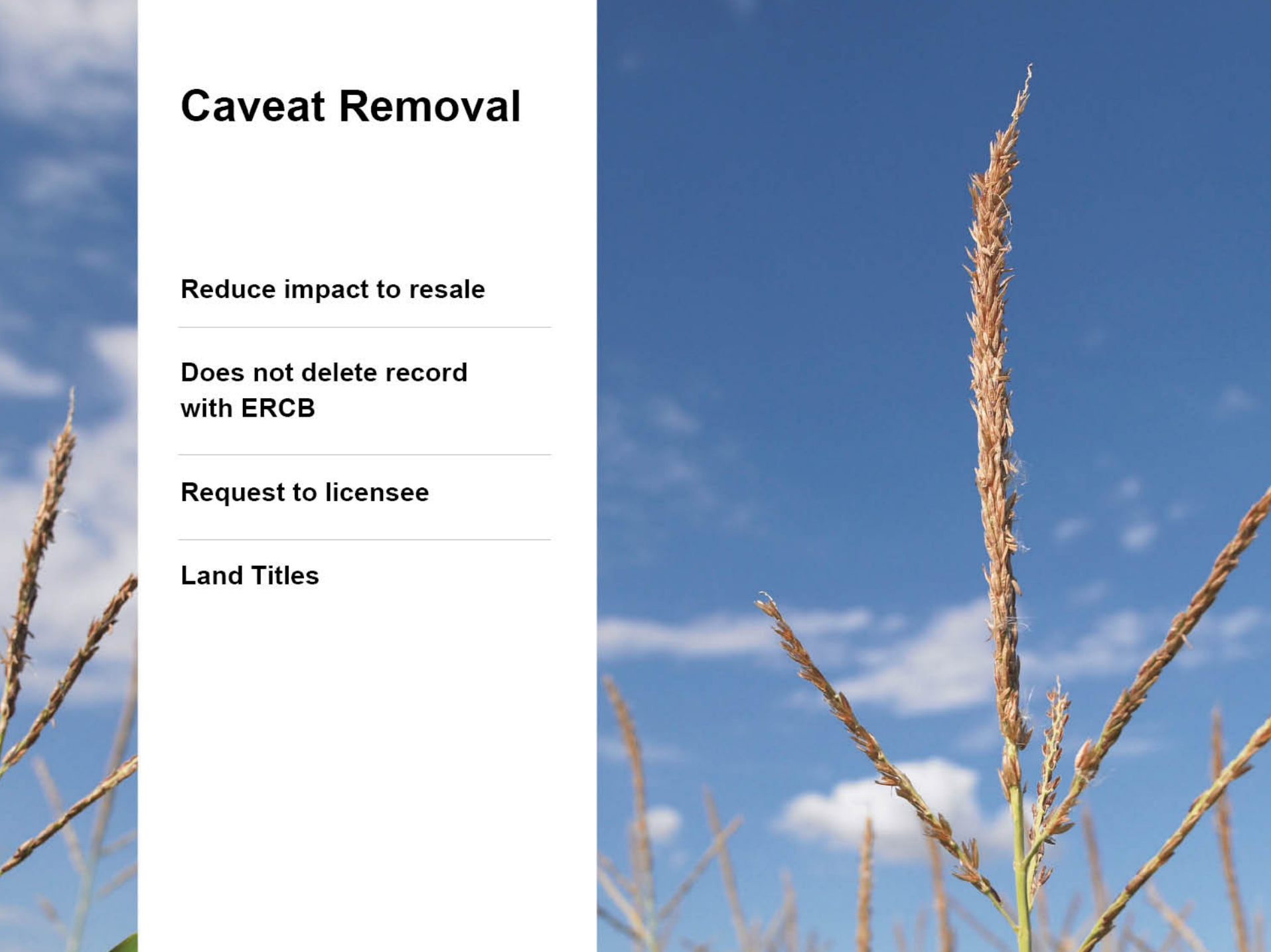
**Does not delete record  
with ERCB**

---

**Request to licensee**

---

**Land Titles**





# Wellhead Infrastructure

## Minimum Wellhead Requirements

- Conspicuously marked or fenced
- Visible in all seasons
- No farm or other vehicles to operate within a 3-metre radius of wellhead



# Contact Information

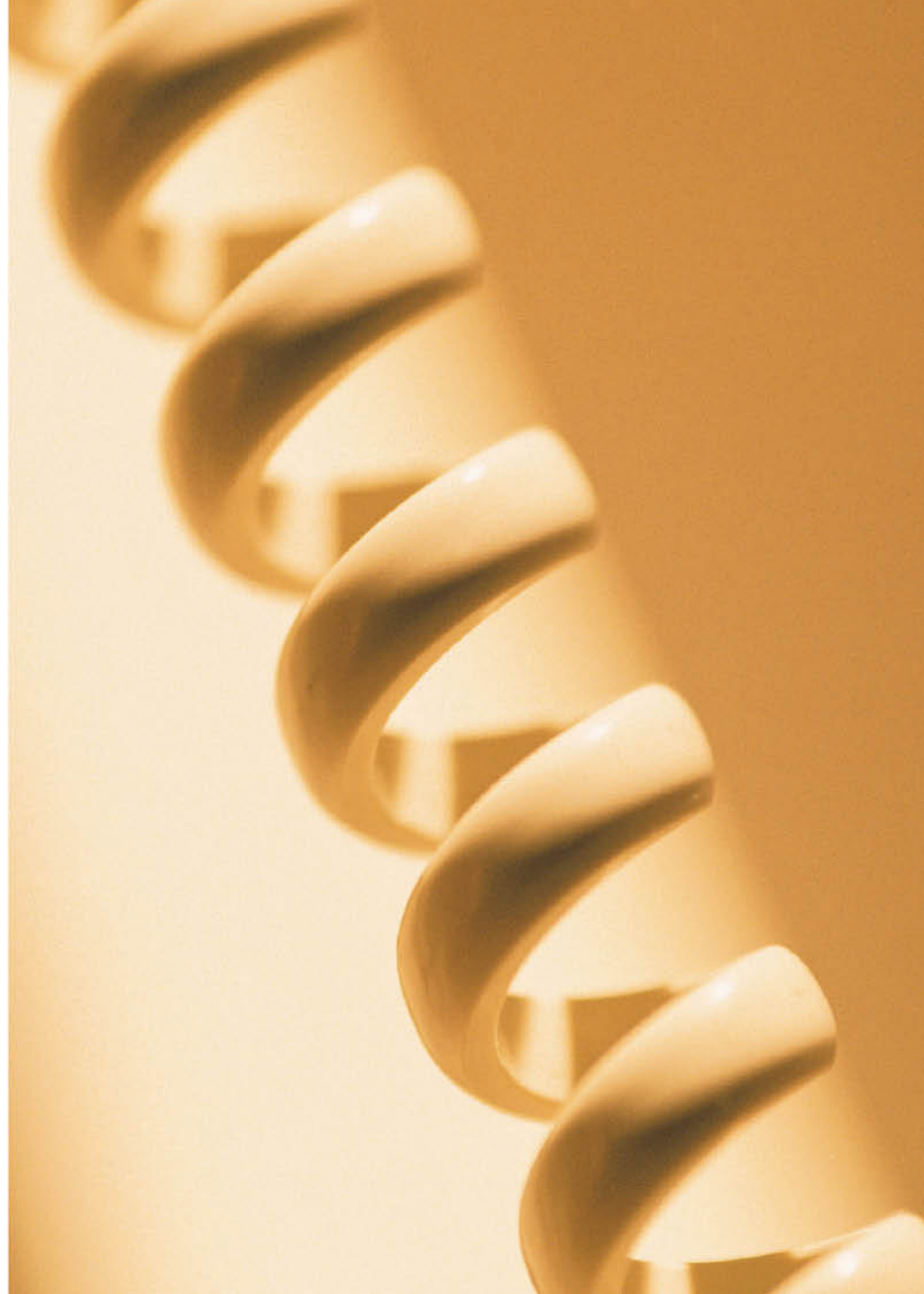
ERCB toll free number  
**1-855-297-8311**

---

Website [www.ercb.ca](http://www.ercb.ca)

---

Red Deer Field Centre:  
**403-340-5454**





A large field of yellow rapeseed flowers stretches across the foreground and middle ground, leading to a distant treeline under a clear blue sky. A white rectangular box is overlaid on the left side of the image.

**Questions?**

[www.ercb.ca](http://www.ercb.ca)