

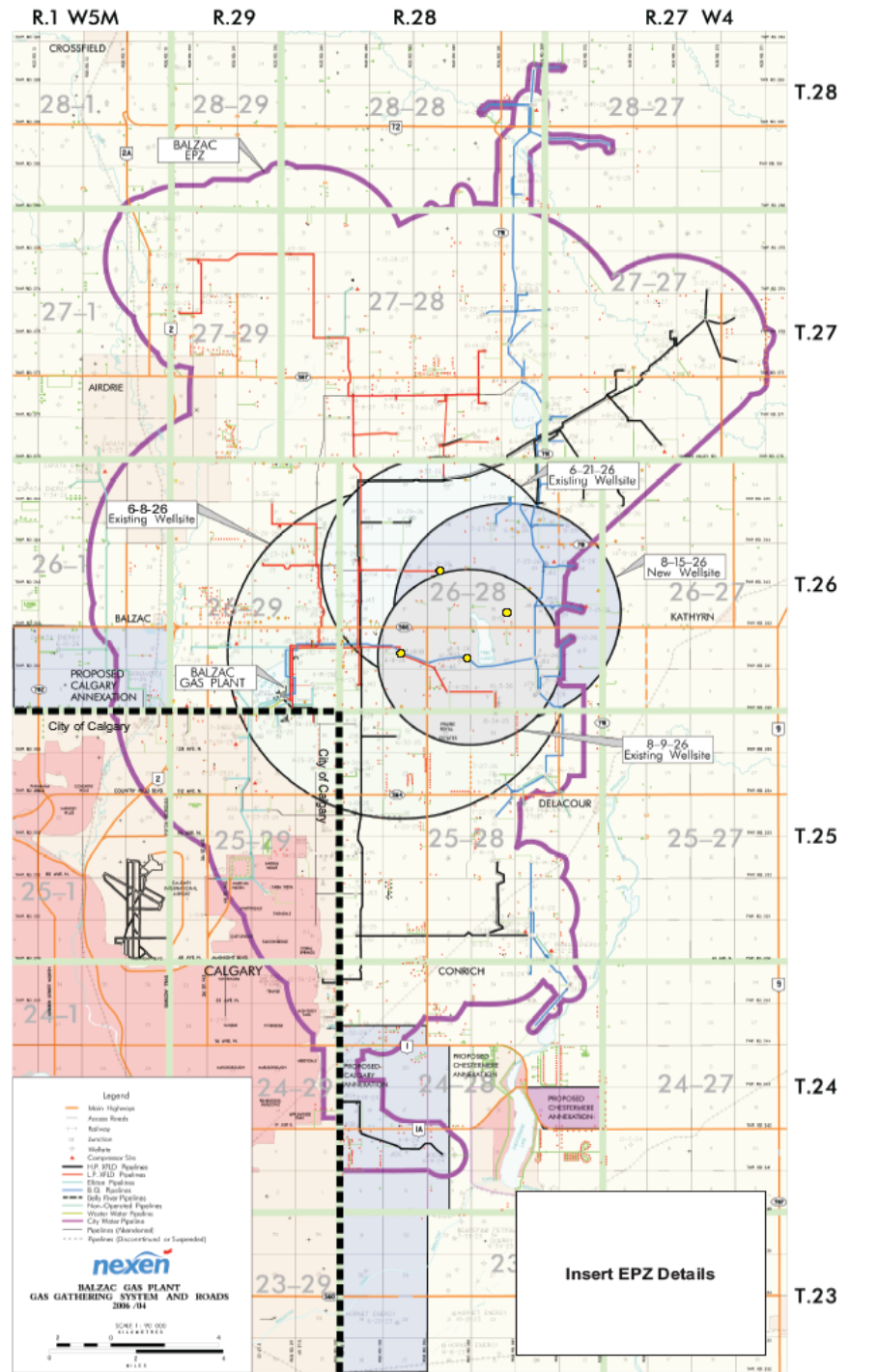


*Balzac Complex & Project Parkway  
Emergency Response Plan*

**The Nexen Balzac Complex ERP & Project Parkway ERP has been developed to outline criteria to assess emergency situations, to provide procedures for immediate response, and to coordinate and establish communications.**

- ❖ The purpose of these ERPs is to provide a planned, coordinated, unified response to emergencies or hazards.**
- ❖ These ERPs and ERP supplements have been developed together with City of Calgary Disaster Services, MD of Rockyview Disaster Services and Calgary Health Region.**
- ❖ All ERPs and most ERP supplements are ERCB approved.**

**Emergency Planning Zones**



# *ERP Development*



- 1) **Must be technically correct and ERCB approved (D-71)**
- 2) **Emergency definitions (Alert, Levels 1, 2 & 3)**
- 3) **Emergency Response (Mobilization/Evacuation, Public Safety, Communication)**
- 4) **Roles and Responsibilities (ICS structure, Positions, Nexen, Government)**
- 5) **EPZ Management (Security, EPZ, EAZ, Road Blocks, Rovers, Evac Teams, Special Needs, Monitoring)**
- 6) **Evacuation Guidelines (ERCB requirements & CHR Protocol)**
  - **Evac Procedures**
  - **Notification (Telus)**
  - **Sheltering Procedures**
  - **Reception Centres**

# *ERP Development*

**nexen**

- 7) Ignition Guidelines
- 8) Post Emergency
- 9) Communication Guidelines
- 10) Training Requirements
- 11) Reference Information
  - Contact info (Internal & External)
  - Technical Information
  - Facility, Wells & P/L
  - Product (H2S)
  - EPZ sizes
  - Mapping
  - Equipment
- 12) Area Information
  - Public, Industry and Residential  
(special needs, contact info, # people, schools)

# *Successful ERP Exercises*

## *Building on success*

- ✓ **Balzac Complex ERP**
- ✓ **7-25 Work Over (full scale)**
- ✓ **Numerous man down drills**
- ✓ **Table Top Exercises**
- ✓ **ICS Training**
- ✓ **Communication Drills**
- ✓ **Urban Response (full scale)**
- ✓ **Field of Dreams (full scale)**
- ✓ **Moduspec ERP preparedness**
- ✓ **Numerous Abandonment ERP supplements**

# Full Scale ERP Exercise

- ✓ *Multi Department (Drilling, Plant and Field Operations, Corporate Support)*
- ✓ *Multi Agency (ERCB, Disaster Services, CHR, Alberta Emergency Management)*
- ✓ *Community Stake Holders*



## *Simulated Event On Site Full response by Nexen*

- 1) Full and Simulated response by governmental agencies*
- 2) Communication exercise (Internal and External)*
- 3) Activation of the Reception Centre*
- 4) Manning Road Blocks*
- 6) Evacuation and Rover response*
- 7) Communication, Communication, Communication*

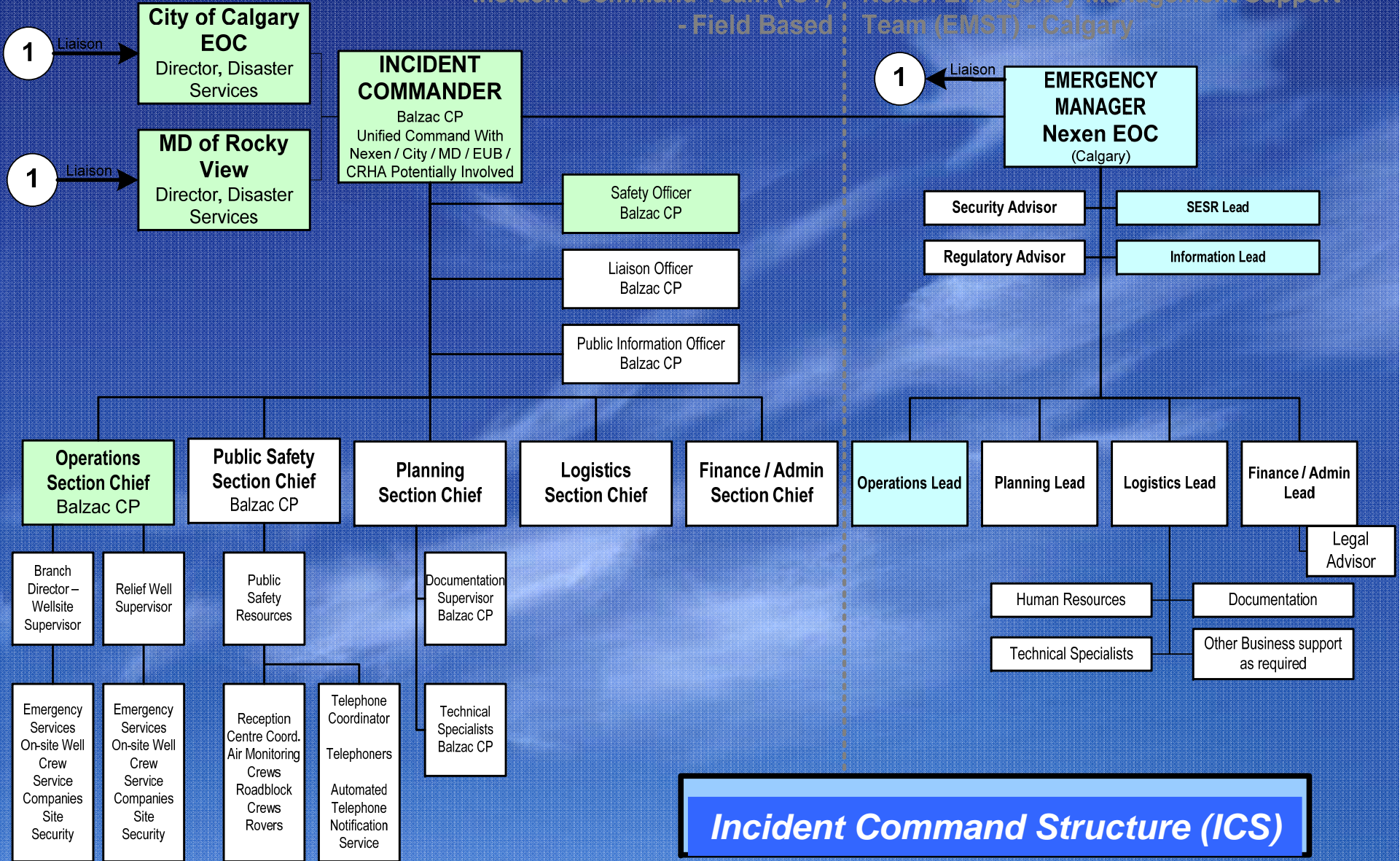


# Emergency Operations Structure for Nexen Balzac Crossfield Expansion Project

(As Discussed With The City of Calgary and MD of Rocky View)



## Incident Command Team (ICT) - Field Based | Nexen Emergency Management Support Team (EMST) - Calgary



**Incident Command Structure (ICS)**

# Discussion

